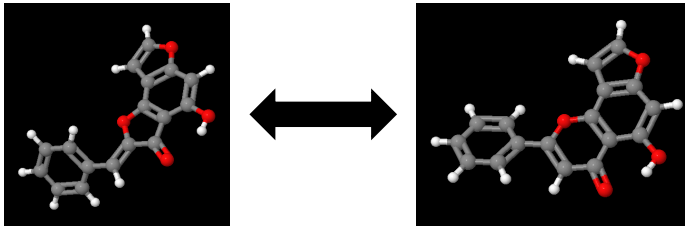
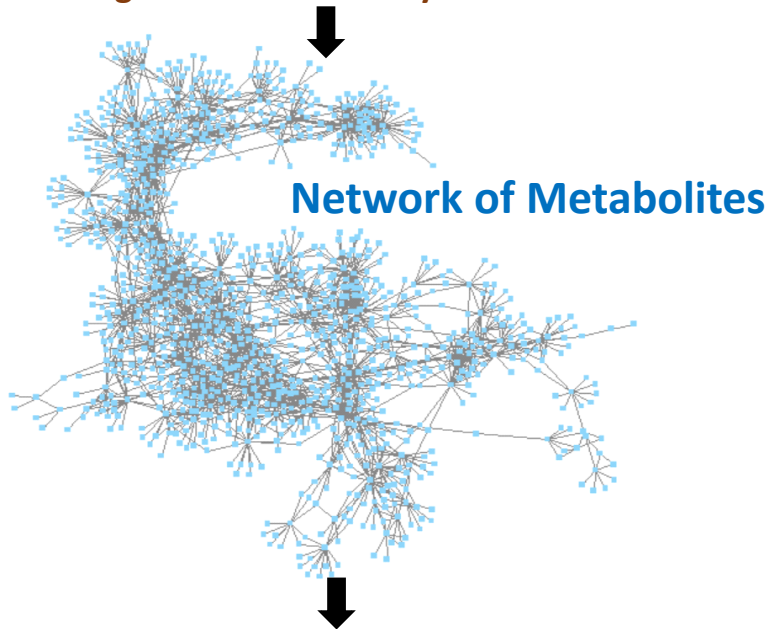


Computational Systems Biology

[1] Investigating structural similarity based networks of metabolites by DPCLUSO



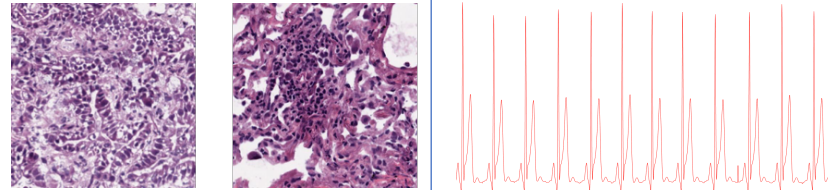
Calculating structure similarity between metabolites



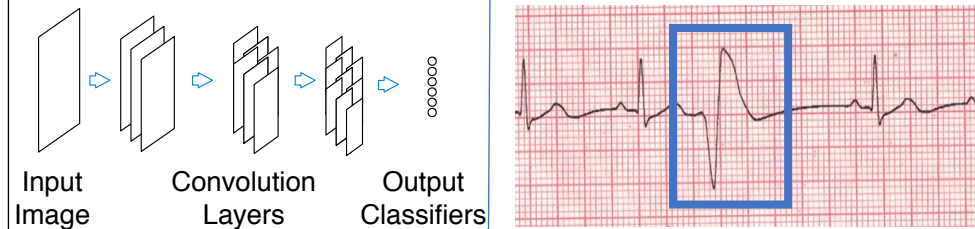
Clustering by DPCLUSO and subsequent knowledge discovery

[2] Analysis of biomedical images and time series data using deep learning

Input: Pathologic image, electrocardiogram time series signal etc.



Model: Convolutional and recurrent neural network framework



Purpose: Cancer cell classification
Abnormal heart rhythm detection, motion recognition